

## Hikvision Temperature Screening Solution

Flexible Product Choice for a Multitude of Scenarios

Hikvision Temperature Screening Solution, with multiple product types and wide range of applications, is designed for the detection of skin-surface temperatures so as to achieve rapid and safe preliminary screening in public areas with high efficiency in a multitude of scenarios.

Thermographic  
Cameras

MinMoe Terminals

Metal Detector Door

DeepinMind NVRs



# We Offer a Better Approach

An approach that incorporates competent technologies, instead of manpower alone, can be a much better choice in many ways. Such an approach is:



## Safer

Non-contact measurement to avoid physical contact



## Faster

One second per person for skin-surface temperature detection

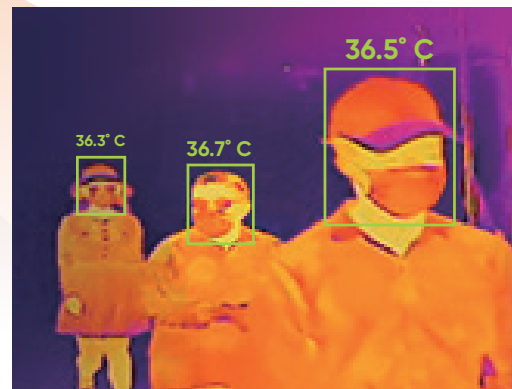


## Smarter

AI detection, greatly reducing false alarms

## Advantages of Thermal Technology

- AI technology ensures thermographic cameras only detect human skin-surface temperature to reduce false alarms of other heat sources.
- Compensation algorithm ensures the temperature is compensated with ambient temperature and the distance of the measured target for better accuracy.
- Thermal technology has been applied widely in temperature screening scenarios as it offers more flexibility and efficiency in preliminary screening of elevated skin-surface temperatures.



## Workflow

Entering  
detection  
area

1

**Human skin-surface temperature measurement**  
Fast preliminary temperature screening  
without contact



Locating  
potential abnormal  
temperatures

3

Second check with  
mercury or ear  
thermometers

4

# Solution Overview

## OPERATION TIPS

- Install the devices in a windless indoor environment
- Set up a specific temperature measurement zone
- Double-check with a thermometer upon detection of elevated skin-surface temperatures

## Temperature Screening with Fast Deployment

### Thermographic Cameras

Visualized bi-spectrum live view



#### Thermographic Bullet/Turret Camera

Flexible product choice for temperature screening of building entrances, elevator halls, airport security checks, etc.

### Wireless Devices

Easy connection, cable free



#### Thermographic Handheld Camera

### Metal Detector Doors

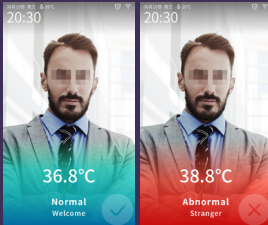
Real-time sound and light alarm



#### Metal Detector Door

## Temperature Screening with Access Control

Touch-Free, Access is Easier but Safer



### Door Control

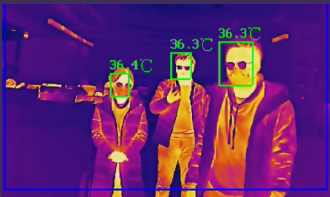
Wall-mounted to control the door



Touch-free access control with temperature measurement

## Group Temperature Screening

Group Screening with High Efficiency



#### Thermographic Bullet Camera

Supports simultaneous temperature screening of multiple people, greatly enhancing efficiency

## Temperature Screening on Patrol

Anytime, Anywhere, Just One Click



#### Thermographic Handheld Camera

Supports preliminary on-spot temperature screening without disturbing a person

## Temperature Screening & Mask Detection

Intuitive Demonstration



#### Thermographic Camera & DeepinMind NVR

The special interface of DeepinMind NVR visually displaying temperature and mask status

# Product Showcase

## Thermographic Cameras

### Thermographic Bullet Camera



DS-2TD2617B-3/6PA

- Thermal resolution: 160 × 120
- Thermal lens: 3 mm / 6 mm
- Optical: 2688 × 1520
- Optical lens: 4 mm / 8 mm
- Bi-spectrum image fusion
- Accuracy: ±0.5°C (±0.3°C with blackbody)
- Measurement range: 30-45°C
- Supports audio alarms
- Working temperature: 10-35°C
- AI human detection, false alarms reduction
- Simultaneous temperature screening for multiple people (Up to 30 people)



### Thermographic Turret Camera



DS-2TD1217B-3/6PA

- Thermal resolution: 160 × 120
- Thermal lens: 3 mm / 6 mm
- Optical: 2688 × 1520
- Optical lens: 4 mm / 8 mm
- Bi-spectrum image fusion
- Accuracy: ±0.5°C (±0.3°C with blackbody)
- Measurement range: 30-45°C
- Supports audio alarms
- Working temperature: 10-35°C
- AI human detection, false alarms reduction
- Simultaneous temperature screening for multiple people (Up to 30 people)



### Thermographic Bullet Camera



DS-2TD2636B-15/P  
DS-2TD2636B-13/P  
DS-2TD2637B-10/P

- Thermal resolution: 384 × 288
- Thermal lens: 15 mm / 13 mm / 10 mm
- Optical: 2688 × 1520
- Optical lens: 6 mm / 6 mm / 4 mm
- Accuracy: ±0.5°C (±0.3°C with blackbody)
- Measurement range: 30-45°C
- Working temperature: 10-35°C
- AI human detection, false alarms reduction
- Simultaneous temperature screening for multiple people (Up to 30 people)



### Thermographic Handheld Camera

DS-2TP21B-6AVF/W

- Thermal resolution: 160 × 120
- Optical resolution: 640 × 480
- Measurement range: 30-45°C
- Touch screen
- Accuracy: ±0.5°C
- Bi-spectrum image fusion
- Supports Wi-Fi
- Supports audio alarms
- Automatic screenshots & uploading



### Blackbody Calibrator

DS-2TE127-G4A

- Temperature resolution: 0.1°C
- Accuracy: ±0.1°C
- Temperature stability: ±0.1°C/h
- Effective emissivity: 0.97±0.02
- Operating temperature: 0-30°C



\*Hikvision's Temperature Screening Thermographic Cameras are designed for the detection of skin-surface temperatures so as to achieve rapid preliminary screening in public areas. Actual core body temperatures should be further confirmed using clinical measurement devices. Under any circumstances, it is highly recommended to use Hikvision's Thermographic Cameras in accordance with local laws and regulations.

## MinMoe Terminal

### MinMoe Wall-Mounting Touch-free Temperature Screening Terminal

DS-K1T671TM-3XF



- LCD touch screen
- Thermographic technology, temperature range: 30-45°C, accuracy: ±0.5°C
- Temperature screening of forehead
- Authentication distance: 0.5 m – 1.5 m, height: 1.2 m – 1.9 m
- Temperature screening with visual results and audio prompt

## Metal Detector Door

ISD-SMG318LT-F



- 18 independent detection zones
- 7-inch LCD touch screen
- Thermal resolution: 160 × 120
- Accuracy: ±0.1°C
- Temperature measurement accuracy: ±0.5°C
- Temperature measurement range: 30-45°C
- Bi-spectrum image fusion
- In accordance with the international safety standard, friendly to pregnant woman, people with cardiac pacemaker, etc.

## DeepinMind NVRs

iDS-7716(/32)NXI-I4(/16P)/X(B)(T)



iDS-9616(/32)NXI-I8/X(B)(T)



- Up to 16 channels of face picture comparison
- 32-library capacity with up to 100,000 face pictures in total

## PoE Switches

DS-3E0105P-E(B)



DS-3E0109P-E(C)



- L2, Unmanaged, 10/100M RJ45 PoE ports, 1 10/100M RJ45 uplink port, 802.3af/at, PoE power budget. 300 m long distance transmission, 6 KV surge protection

## Monitors



DS-D5024FN  
(23.8")



DS-D5032QE  
(31.5")



DS-D5043QE  
(43")



DS-D5024FC  
(23.8")



DS-5032FC-A  
(31.5")



DS-D5043UC  
(43")

- 1080p, HDMI/VGA input, view angle: 178°/178°, plastic casing, VESA, base bracket included, 24/7 operation

- 1080p, HDMI/VGA input, with built-in speaker, plastic casing, VESA, base bracket included, 24/7 operation

## HikCentral Professional



- Flexible, scalable, reliable and powerful central surveillance system
- Supports live view, play back, access control, alarm management, personnel identification, temperature data storage, abnormal temperature trend analysis, etc.
- The customized HikCentral Professional version supports thermographic products, DeepinMind NVRs and face recognition terminals